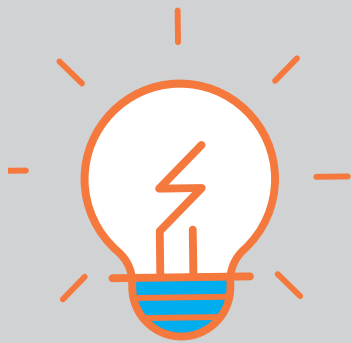


# Living with Risk: Decision Support Approach

## COACHING CONVERSATIONS

### WHAT ARE THE ISSUES AND PAIN POINTS?

- What is the real challenge here?
- Where are you stuck?
- What are you really worried about?
- Is this new or different?
- What is preventing you from resolving this situation?
- What are the obstacles?

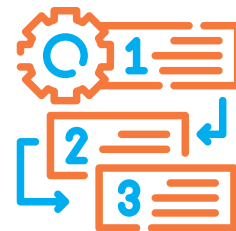


### LET'S DIG DEEPER

- Who else is concerned?
- Is this a high-risk situation?
- Why is this happening (causes)?
- What are the potential harms (negative social, emotional, physical consequences)?
- What are the benefits for the client (positive social, emotional, physical consequences)?

### LET'S DEVELOP A PLAN

- What does the older adult want to do?
- What can be done to minimize the concern, causes, harm?
- What factors can be modified or adapted?



### LET'S DETERMINE THE NEXT STEPS

- What options are agreeable to the older adult?
- What matters most to the older adult?
- What strengths are being leveraged?
- Can follow-up be arranged?